

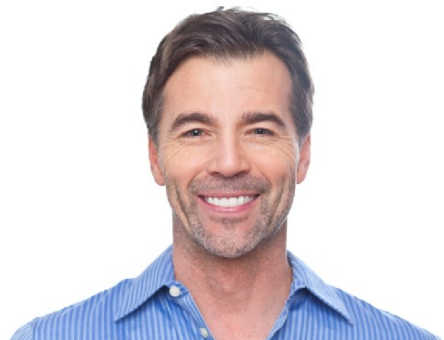


# FAMILY MEMBERS

(členové rodiny)

# PARENTS (RODIČE), CHILDREN (DĚTI)

**FATHER (DAD)**



He is a **man**. (On je muž.)

**MOTHER (MUM)**

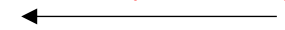


She is a **woman**. (Ona je žena.)

husband (manžel)



wife (manželka)



**SON  
(SYN)**



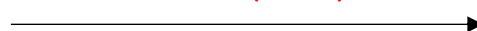
He is a **boy**. (On je chlapec.)

**DAUGHTER  
(DCERA)**



She is a **girl**. (Ona je dívka.)

brother (bratr)



sister (sestra)



married =  
vdaná, ženatý

partnered =  
v partnerství

divorced =  
rozvedený/á

child = dítě  
children = děti

man = muž  
men = muži

woman = žena  
women = ženy

only one child =  
jedináček

stepbrother =  
nevlastní bratr  
stepsister =  
nevlastní sestra

# GRANDPARENTS (PRARODIČE)

GRANDMOTHER

GRANDFATHER



GRANDPA

GRANDMA



FATHER

MOTHER



GRANDSON (VNUK)



GRANDDAUGHTER (VNUČKA)



praprarodiče =  
greatgrandparents

předci = ancestors

senior =  
důchodce

seniors =  
důchodci

retired =  
v důchodu

On je mrtvý.  
(He is dead.)

Ona je mrtvá.  
(She is dead.)

Zemřeli.  
(They died.)

# RELATIVES (PŘÍBUZNÍ)

GRANDFATHER GRANDMOTHER



MY MOTHER



UNCLE (STRÝC)

AUNT (TETA)



COUSIN  
(BRATRANEC)

COUSIN  
(SESTŘENICE)

ME



MY SISTER



BROTHER-IN-LAW  
(ŠVAGR)



NEPHEW  
(SYNOVEC, NETERŤ)



mother-in-law  
(tchyně)

father-in-law  
(tchán)

son-in-law  
(zeť)

daughter-in-law  
(snacha)

brother-in-law  
(švagr)

sister-in-law  
(švagrová)